

# Columbia Park West Master Plan

## Fill out the Columbia Park West Survey!

### **CRT Meeting #1—Wednesday, June 17 from 4-6 p.m. at the Kiwanis Building, 6007 Columbia Park Trail, Kennewick**

At the first Community Resource Team (CRT) meeting, which was open to the public, the cities of Richland and Kennewick, Tri-Cities Visitor & Convention Bureau, Tri-City Regional Chamber of Commerce, US Army Corps of Engineers, and Tapteal Greenway Association, among others, provided input on the project.

### **Public Meeting #1—Wednesday, June 17 from 7-9 p.m. at the Kiwanis Building, 6007 Columbia Park Trail, Kennewick**

Attendees saw maps of the project and told us what they thought. The project team will use input from you, the CRT, and the cities of Richland and Kennewick as part of preparing alternatives for master planning the park.

## Project Background

The cities of Richland and Kennewick are partnering to create a master plan for the 146-acre Columbia Park West site on the Columbia River. The cities want the community to have programs, services, and open space that will meet its long-term recreational and cultural needs. Community members will have many opportunities to provide input on the design and uses of the site starting with stakeholder interviews and continuing with Community Resource Team meetings, public meetings, and updates to the project website.

## Project Location and Uses

Columbia Park West stretches along the south side of the Columbia River (please see map below). It includes the Sacagawea Heritage Trail and extends southward to State Route 240. The site straddles Richland and Kennewick, with its western boundary just east of Columbia Center Boulevard and its eastern boundary at North Edison Street. Currently, the site is most often used for passive recreation, but includes a public boat launch and duck pond. It is next to popular Columbia Park East, which serves as a key community recreational resource and includes the Playground of Dreams, a municipal golf course, and a fishing pond.

## Additional Public Meetings

### **CRT Meeting #2—October 2009 (date, time, and location to be determined)**

The second CRT meeting will be open to the public and held before the second public meeting. CRT members will provide their input on the alternatives.

### **Public Meeting #2—October 2009 (date, time, and location to be determined)**

Tell us what you like and don't like about the alternatives. The project team will review what it has heard from the public and the cities and refine the alternatives into a preferred master plan.

### **Adoption Process—December 2009 (date, time, and location to be determined)**

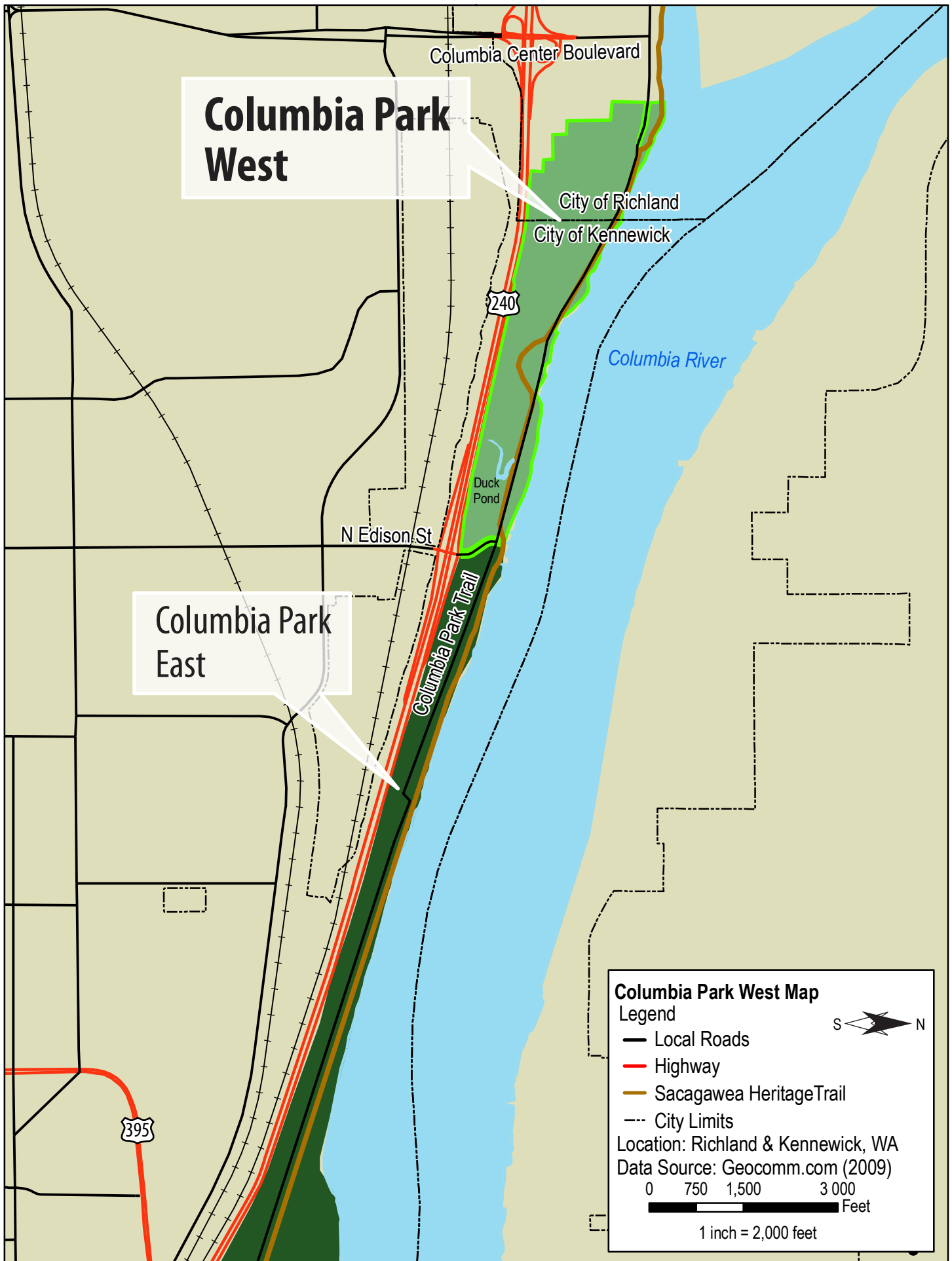
You may comment on the recommended master plan in writing or by testifying at the hearings.



## If you have questions, please contact:

Bill King, Deputy City Manager  
City of Richland  
505 Swift Boulevard  
P.O. Box 190 MS 02  
Richland, WA 99352

Email: [CPWplan@ci.richland.wa.us](mailto:CPWplan@ci.richland.wa.us)  
Phone: (509) 942-7583



**Columbia Park West**

**Columbia Park East**

**Columbia Park West Map**

Legend

- Local Roads
- Highway
- Sacagawea Heritage Trail
- - - City Limits

Location: Richland & Kennewick, WA  
Data Source: Geocomm.com (2009)

0 750 1,500 3,000 Feet

1 inch = 2,000 feet

