

Columbia Park West Master Plan

CRT Meeting 3 - Thursday, January 21, 2010, from 4-6 PM at the Kiwanis Building, 6007 Columbia Park Trail, Kennewick

The members of the Community Resource Team (CRT) will provide the project team with their feedback on the two draft master plan alternatives. One alternative has been refined to include the Hanford Reach Interpretive Center (The Reach), a new addition to the master plan alternatives.

Draft Master Plan Alternatives

- **Preferred Alternative without Reach Center:** This alternative includes the partial relocation of Columbia Park Trail Drive at the western end of the park. It would result in a large multi-use area adjacent to the Columbia River in the area of the vacated portion of Columbia Park Trail Drive. This alternative includes a location at the western end of the park for a vendor and park concession village that would include a location for a public attractor (e.g., a community center, museum, aquatic center, or other public feature). An area for the Three Rivers Carousel is provided in this alternative at the eastern end of the park near Edison Street.
- **Preferred Alternative with Reach Center:** This alternative, which arose in discussions with the Richland Public Facilities District, envisions the Columbia Park West site as a possible location for The Reach, which has to date been planned for Columbia Point South. To determine whether The Reach can be accommodated on the site and whether it is compatible with the other elements desired in the park, the project team developed an alternative that would integrate The Reach into Columbia Park West. This alternative includes the interpretive center building, parking, circulation, outdoor educational areas, and view corridors to the Columbia River. Two potential sites for the Three Rivers Carousel are provided in this alternative. One site would be located in the vicinity of The Reach facility at the western end of the park and an alternative location is provided at the eastern end of the park near Edison Street.

Project Background

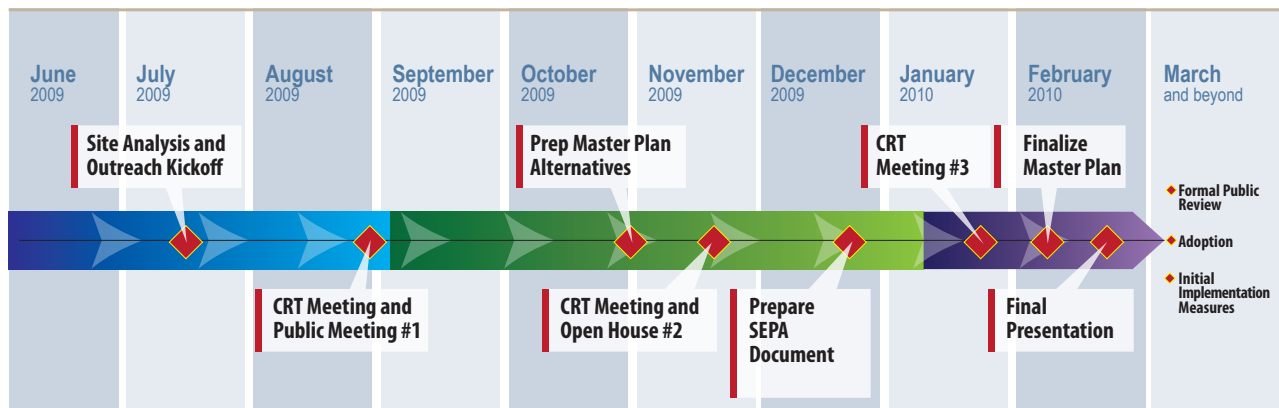
The cities of Richland and Kennewick (cities) are partnering to create a master plan for the 146-acre Columbia Park West site on the Columbia River. The cities want the community to have programs, services, and open space that will meet its long-term recreational and cultural needs. Community members have had many opportunities to provide input on the design and uses of the site starting with stakeholder interviews and the first, public meetings. Opportunities for public input continue with updates to the project website (address below).

The cities held the first CRT and public meetings in June 2009. At the meetings, CRT members and the community had the opportunity to see maps of the project area and tell the project team what they would like to see in the plan for the park. Feedback from the public, the cities of Richland and Kennewick, and stakeholders helped the project team develop the three draft alternatives that will be presented at the October 2009 CRT meeting and open house.

Project Location and Uses

Columbia Park West stretches along the south side of the Columbia River (please see map below). It includes the Sacagawea Heritage Trail and extends southward to State Route 240. The site straddles Richland and Kennewick, with its western boundary just east of Columbia Center Boulevard and its eastern boundary at North Edison Street. Currently, the site is most often used for passive recreation, but it includes a public boat launch and duck pond. It is next to popular Columbia Park East, which serves as a key community recreational resource and includes the Playground of Dreams, a municipal golf course, and a fishing pond.

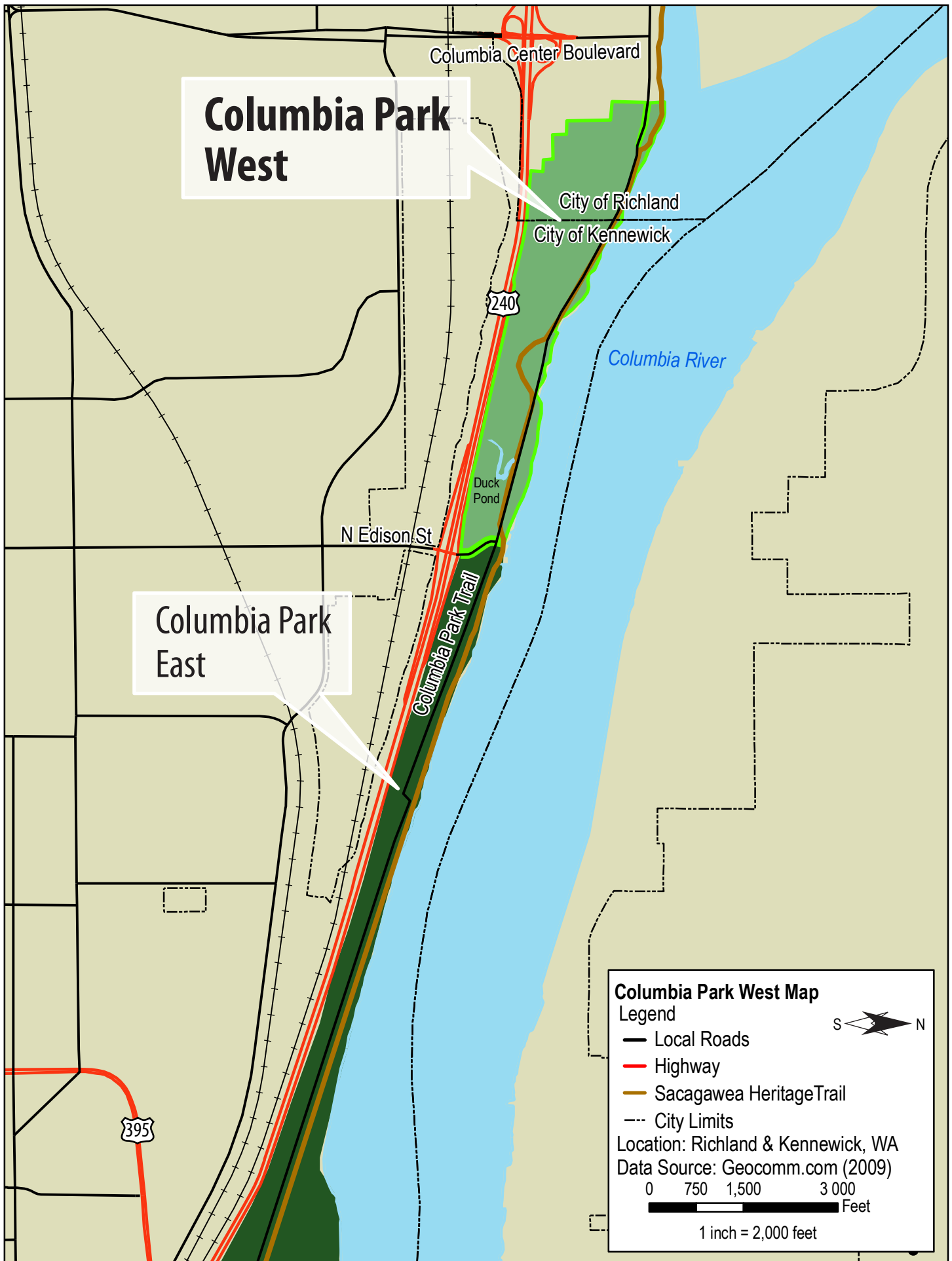
Project Timeline



If you have questions, please contact:

Bill King, Deputy City Manager
City of Richland
505 Swift Boulevard
P.O. Box 190 MS 02
Richland, WA 99352

Email: CPWplan@ci.richland.wa.us
Phone: (509) 942-7583



Columbia Park West

Columbia Park East

Columbia Park West Map
Legend

- Local Roads
- Highway
- Sacagawea Heritage Trail
- - - City Limits

Location: Richland & Kennewick, WA
Data Source: Geocomm.com (2009)

0 750 1,500 3,000 Feet

1 inch = 2,000 feet