

Columbia Park West Master Plan

COME TO THE COLUMBIA PARK WEST OPEN HOUSE!

Open House - Wednesday, October 21, 2009 from 7-9 PM at the Kiwanis Building, 6007 Columbia Park Trail, Kennewick

Tell us what you like and don't like about the draft alternatives for the master plan for Columbia Park West. The project team will use what it has heard from the public and the Community Resource Team to refine the alternatives into a preferred master plan.

The second meeting of the Community Resource Team (CRT) will be held at 4 p.m. (before the open house) at the same location. CRT members will give their input on the three draft alternatives and strategies for implementation.

The alternatives will also be posted on the project website. Letters and email comments on the alternatives received prior to November 6, 2009, will be considered in preparing the preferred plan for Columbia Park West.

Draft Master Plan Alternatives

- **Alternative #1:** This alternative is distinguished by the continuation of Columbia Park Trail Drive in its current location, with periodic traffic calming circles provided in the road. An aquatic center is located in a vendor and park concession village at the western end of the park and a large multi-use great lawn area is included adjacent to the vendor and park concession village.
- **Alternative #2:** This alternative is distinguished by the partial relocation of Columbia Park Trail Drive at the western end of the park. This alternative results in a large multi-use area adjacent to the river in the area of the vacated portion of Columbia Park Trail Drive. A vendor and park concession village is provided that includes a community cultural center venue. Area is provided for the Three Rivers Carousel at the eastern end of the park.
- **Alternative #3:** This alternative is distinguished by a complete relocation of Columbia Park Trail Drive, with the new road being constructed at the south side of the park, near State Route 240. The road relocation results in bicycle and pedestrian-only access to the shoreline throughout the park, and provides large areas of open space adjacent to the river. A vendor and park concession village with an aquatic center is included at the western end of the park.

All three alternatives retain popular features of the existing park including nature trails, disc golf and an enhanced duck pond.

Please come to the October 21 open house to see the draft master plan alternatives and let the cities of Richland and Kennewick know what you think!

Project Background

The cities of Richland and Kennewick (cities) are partnering to create a master plan for the 146-acre Columbia Park West site on the Columbia River. The cities want the community to have programs, services, and open space that will meet its long-term recreational and cultural needs. Community members have had many opportunities to provide input on the design and uses of the site starting with stakeholder interviews and the first, public meetings. Opportunities for public input continue with updates to the project website (address below).

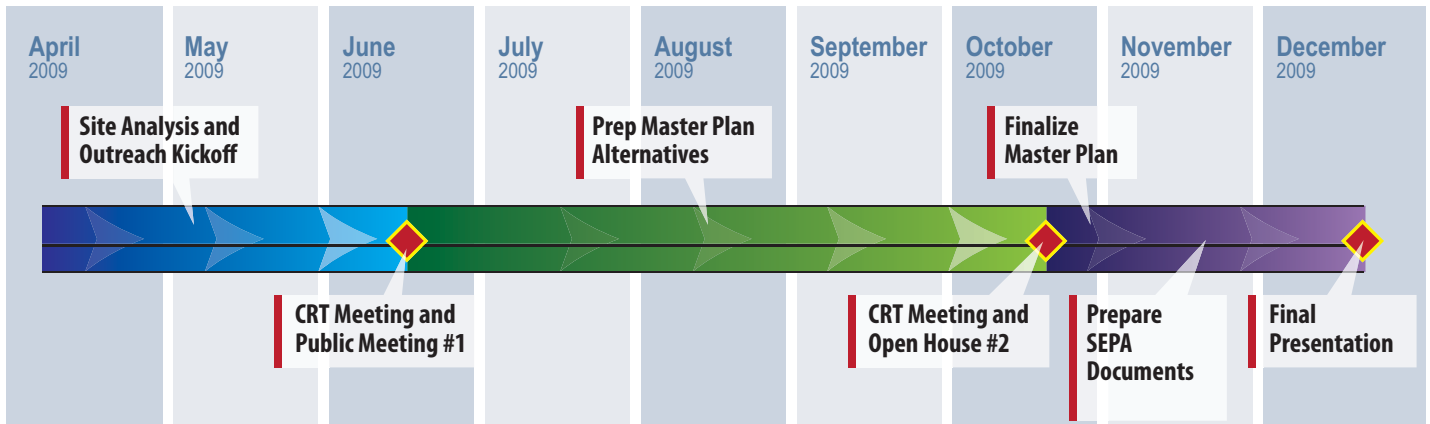
The cities held the first CRT and public meetings in June 2009. At the meetings, CRT members and the community had the opportunity to see maps of the project area and tell the project team what they would like to see in the plan for the park. Feedback from the public, the cities of Richland and Kennewick, and stakeholders helped the project team develop the three draft alternatives that will be presented at the October 2009 CRT meeting and open house.

Project Location and Uses

Columbia Park West stretches along the south side of the Columbia River (please see map below). It includes the Sacagawea Heritage Trail and extends southward to State Route 240. The site straddles Richland and Kennewick, with its western boundary just east of Columbia Center Boulevard and its eastern boundary at North Edison Street. Currently, the site is most often used for passive recreation, but it includes a public boat launch and duck pond. It is next to popular Columbia Park East, which serves as a key community recreational resource and includes the Playground of Dreams, a municipal golf course, and a fishing pond.

Columbia Park West Master Plan

Project Timeline

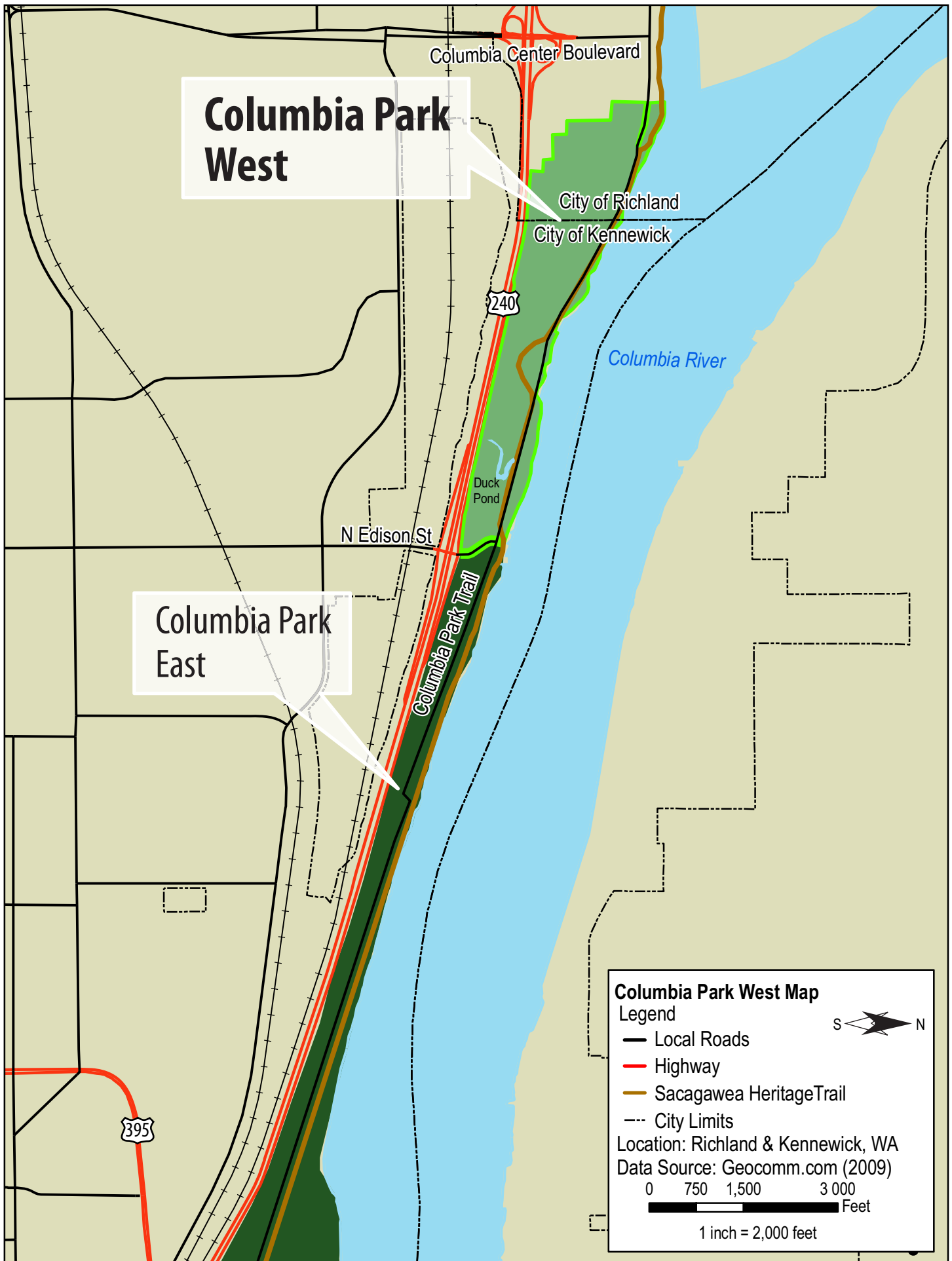


If you have questions, please contact:

Bill King, Deputy City Manager
City of Richland
505 Swift Boulevard
P.O. Box 190 MS 02
Richland, WA 99352

Email: CPWplan@ci.richland.wa.us

Phone: (509) 942-7583



Columbia Park West

Columbia Park East

Columbia Park West Map
Legend

- Local Roads
- Highway
- Sacagawea Heritage Trail
- - - City Limits

Location: Richland & Kennewick, WA
Data Source: Geocomm.com (2009)

0 750 1,500 3,000 Feet

1 inch = 2,000 feet