

# Columbia Park West Master Plan

## The Project

The cities of Richland and Kennewick (cities) are partnering to create a master plan for the 146-acre Columbia Park West site on the Columbia River. The cities want the community to have programs, services, and open space that will meet its long-term recreational and cultural needs. Community members will have many opportunities to provide input on the design and uses of the site starting with stakeholder interviews and continuing with Community Resource Team meetings, public meetings, and updates to the project website (address below).

## Project Location and Uses

Columbia Park West stretches along the south side of the Columbia River (please see map on reverse). It includes the Sacagawea Heritage Trail and extends southward to State Route 240. The site straddles Richland and Kennewick, with its western boundary just east of Columbia Center Boulevard and its eastern boundary at North Edison Street. Currently, the site is most often used for passive recreation, but includes a public boat launch and duck pond. It is next to popular Columbia Park East, which serves as a key community recreational resource and includes the Playground of Dreams, a municipal golf course, and a fishing pond.

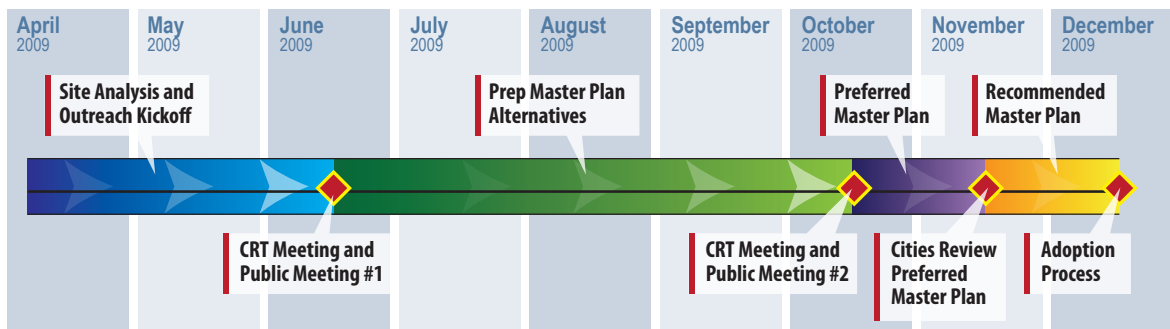
Please share your ideas for the park at public meetings and on the project website. The project schedule—with opportunities to give your opinions—is listed below.

- Public Meeting #1—Wednesday, June 17 from 7-9 p.m. at the Kiwanis Building, 6007 Columbia Park Trail, Kennewick**

At this meeting, you can see maps of the project and tell us what you think. Then, the project team will use input from you, the Community Resource Team, and the cities as part of preparing alternatives for master planning the park.
- Public Meeting #2—October 2009 (date, time, and location to be determined)**

Tell us what you like and don't like about the alternatives. Then the project team will review what it has heard and refine the alternatives into a preferred master plan. The cities will give their input about the plan and that information will also be part of developing the recommended master plan.
- Adoption Process—December 2009 (date, time, and location to be determined)**

You may comment on the recommended master plan in writing or by testifying at the hearings.

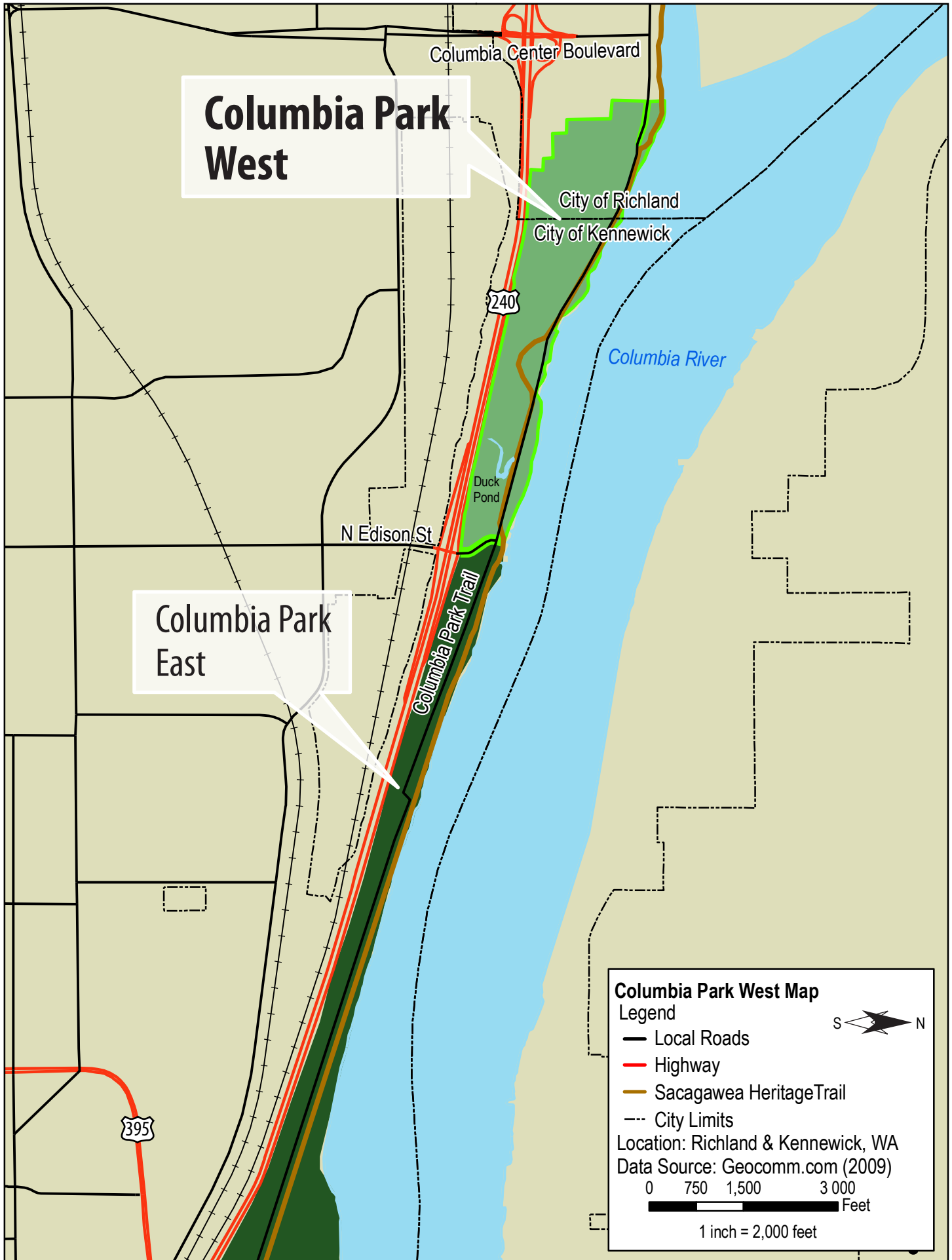


### If you have questions, please contact:

Bill King, Deputy City Manager for Community and Development Services  
 City of Richland  
 505 Swift Boulevard  
 P.O. Box 190 MS 02  
 Richland, WA 99352  
 CPWplan@ci.richland.wa.us  
 Phone: (509) 942-7583

### For more information:

Visit the City of Richland website [www.ci.richland.wa.us](http://www.ci.richland.wa.us) and click on the Parks and Recreation page and the City of Kennewick's website [www.ci.kennewick.wa.us](http://www.ci.kennewick.wa.us).



**Columbia Park West**

**Columbia Park East**

**Columbia Park West Map**  
Legend

- Local Roads
- Highway
- Sacagawea Heritage Trail
- City Limits

Location: Richland & Kennewick, WA  
Data Source: Geocomm.com (2009)

0 750 1,500 3,000 Feet  
1 inch = 2,000 feet